

BENEFITS

Highest Efficiency

SunPower™ Solar Panels are the most efficient photovoltaic panels on the market today, providing more power in the same amount of space.

Attractive Design

Unique design combines high efficiency and a sleek, black appearance to blend elegantly with the roof.

Maximum System Output

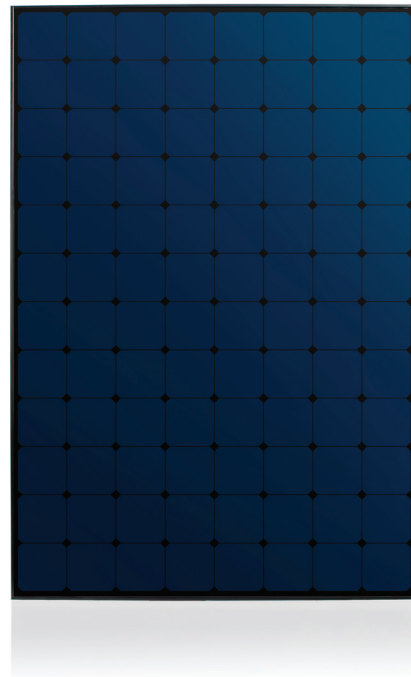
Compatible with high efficiency transformer-less inverters for the highest system output.

Reliable and Robust Design

Proven materials, tempered front glass, and a sturdy anodised frame allow panel to operate reliably in multiple mounting configurations.

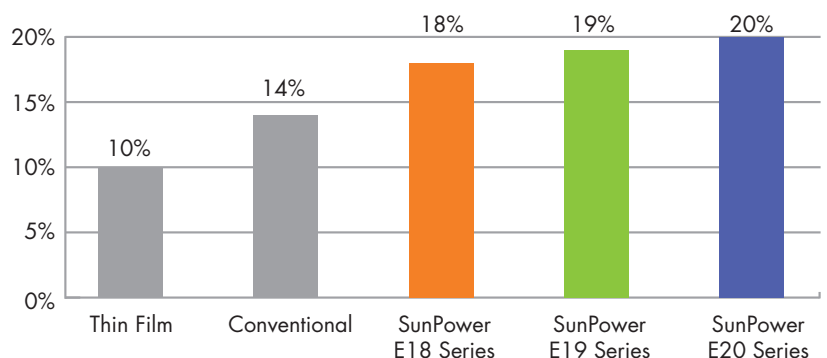


SPR-300NE-BLK-D



The SunPower™ 300 signature black™ solar panel provides a **revolutionary combination of high efficiency and attractive, sleek appearance**. Utilising 96 back-contact solar cells and a black backsheet, the SunPower 300 blends elegantly with the roof and delivers a total panel conversion efficiency of 18.4%. The panel's reduced voltage-temperature coefficient and exceptional low-light performance attributes provide outstanding energy delivery per peak power watt.

SunPower's High Efficiency Advantage



Electrical Data

Measured at Standard Test Conditions (STC): Irradiance 1000W/m², AM 1.5, and cell temperature 25° C

Nominal Power (+5/-3%)	P _{nom}	300 W
Efficiency	η	18.4 %
Rated Voltage	V _{mpp}	54.7 V
Rated Current	I _{mpp}	5.49 A
Open Circuit Voltage	V _{oc}	64.0 V
Short Circuit Current	I _{sc}	5.87 A
Maximum System Voltage	IEC	1000 V
Temperature Coefficients	Power (P)	-0.38% / K
	Voltage (V _{oc})	-176.6mV / K
	Current (I _{sc})	3.5mA / K
NOCT		46° C +/-2° C
Series Fuse Rating		20 A
Limiting Reverse Current (3-strings)	I _r	14.7 A
Grounding		No special requirements / Compatible with TL inverters

Electrical Data

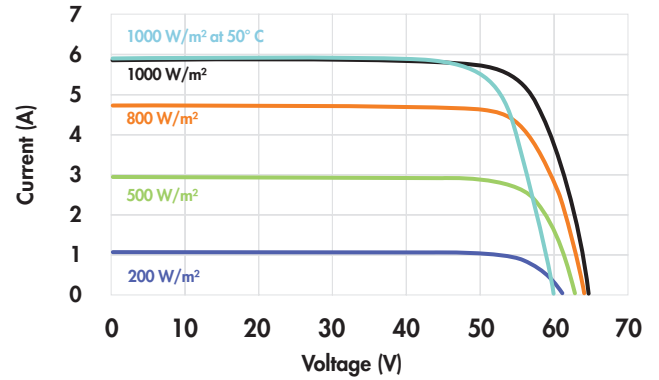
Measured at Nominal Operating Cell Temperature (NOCT): Irradiance 800W/m², 20° C, wind 1 m/s

Nominal Power	P _{nom}	222 W
Rated Voltage	V _{mpp}	50.2 V
Rated Current	I _{mpp}	4.42 A
Open Circuit Voltage	V _{oc}	59.7 V
Short Circuit Current	I _{sc}	4.75 A

Mechanical Data

Solar Cells	96 SunPower all-back contact monocrystalline	Output Cables	1000mm length cables / MultiContact (MC4) connectors
Front Glass	High transmission tempered glass	Frame	Anodised aluminium alloy type 6063 (black)
Junction Box	IP-65 rated with 3 bypass diodes 32 x 155 x 128 (mm)	Weight	18.6 kg

I-V Curve



Current/voltage characteristics with dependence on irradiance and module temperature.

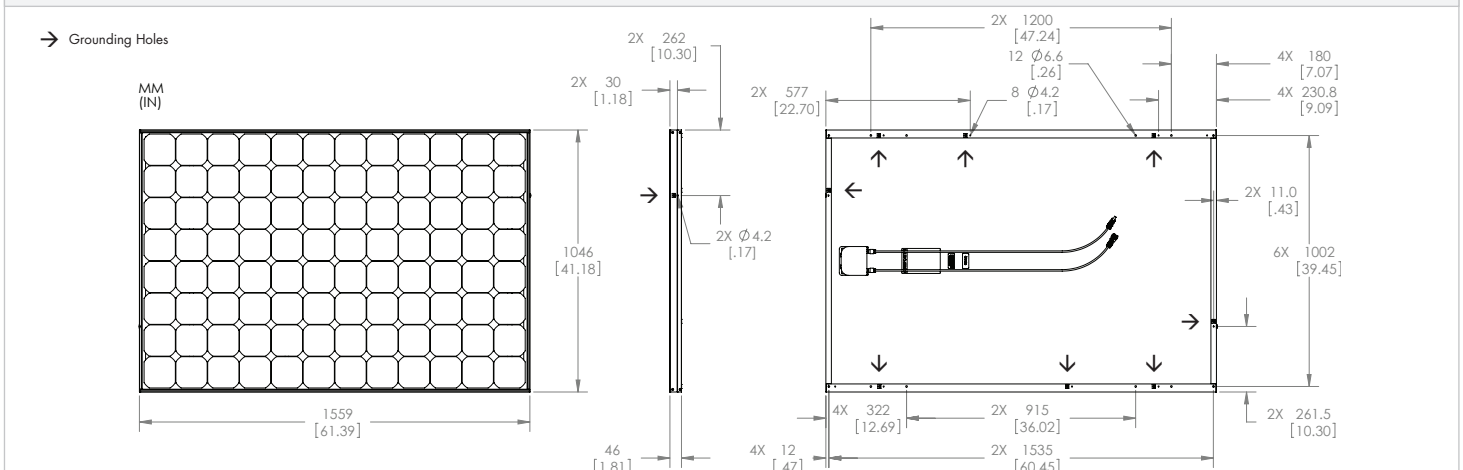
Tested Operating Conditions

Temperature	-40° C to +85° C
Max load	550 kg / m ² (5400 Pa), front (e.g. snow) w / specified mounting configurations
	245 kg / m ² (2400 Pa) front and back - e.g. wind
Impact Resistance	Hail – 25 mm at 23 m/s

Warranties and Certifications

Warranties	25 year limited power warranty 10 year limited product warranty
Certifications	IEC 61215 Ed. 2, IEC 61730 (SCII)

Dimensions



CAUTION: READ SAFETY AND INSTALLATION INSTRUCTIONS BEFORE USING THE PRODUCT.

Visit sunpowercorp.com for details